



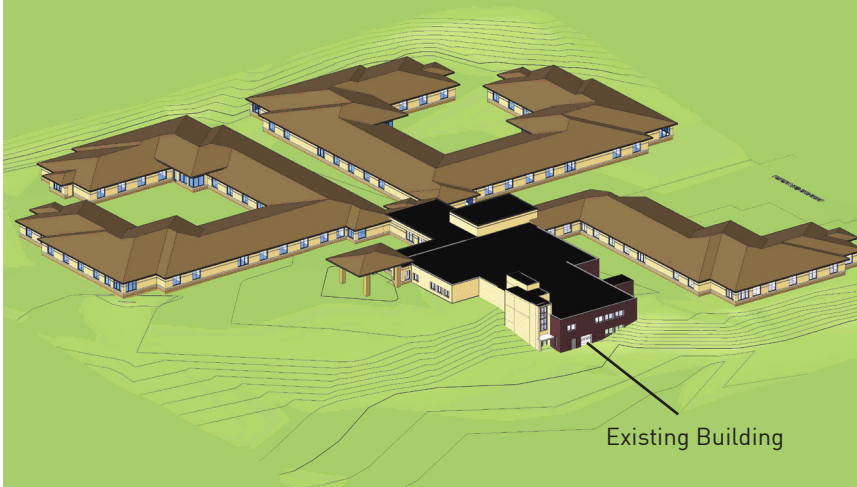
Pine Valley

Healthcare & Rehabilitation Center

Richland County has operated a county nursing home for 137 years!

Pine Valley Healthcare and Rehabilitation Center is currently seeking county board approval for facility improvements. The Pine Valley facility was built in 1960 and has more than exceeded its useful life. The county's investment in the future would create a new building attached to the current healthcare center. These upgrades will allow senior citizens to continue to live in their own community with dignity and comfort at an affordable cost to residents and their families.

Pine Valley's Future Facility



Keep High Quality and Cost-Effective Care Close to Home

The Pine Valley facility offers numerous services for the aging members of Richland County, including skilled nursing care, physical therapy, occupational therapy, speech therapy, and memory care. The center provides care to some of the most medically-challenging residents in Richland County. Not only do these residents require more expensive services, but they are often unable to find this level of care elsewhere.

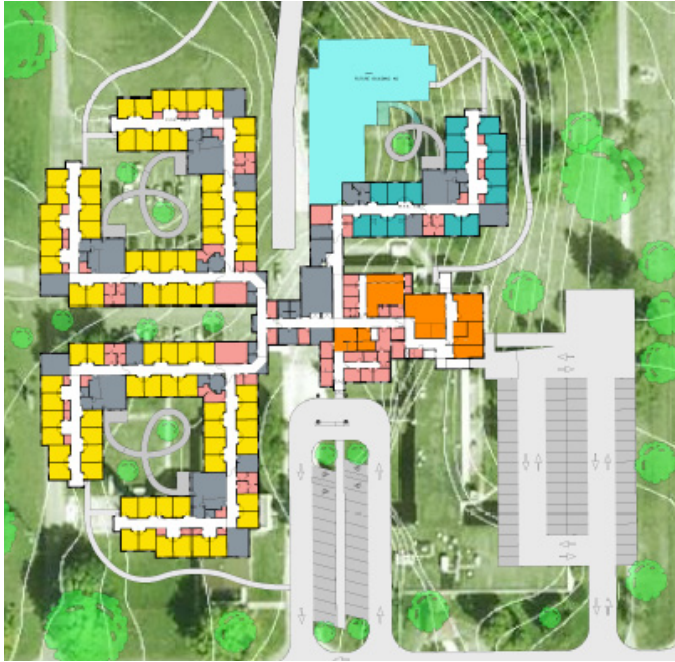
It is Richland County's responsibility to provide affordable senior living options for the county's elderly. Pine Valley offers high quality care while remaining cost-effective. The updated building will offer improvements that will create an efficient and desirable environment for residents, families and staff. Furthermore, Pine Valley will be able to continue to serve the county for many more years.

Did you know?

Richland County has a growing elderly population. Currently, nearly 25% of the county's population is comprised of residents age 65 and older. In comparison, only 14% of the state's population is 65 years and older. This disparity between the county and state has been steadily increasing.

Furthermore, social security is the only source of income for 42% of the county's 65 and older population, leaving very little money to spend on housing and care.

Pine Valley's Future Layout



KEY

- Skilled Nursing Resident Room
- CBRF Resident Room
- Staff & Resident Common Area
- Corridor
- Repurposing Existing Building for Community, PT/OT Spaces
- Administrative Spaces
- Area for Future Expansion

Maximizing Efficiency

Pine Valley's new facility will be a responsible use of taxpayer dollars. Several features of the new building and its systems will help lower the utility costs.

- Repurposing the Existing Building
- More Efficient Layout
- Geo-Thermal System
- Automatic Lighting Controls
- HVAC Controls to Optimize Rooms in Use
- Higher Security Level with Automatic Features

Utility costs will reduce from approximately \$150,000 to \$100,000 annually.

Saving \$50,000 EACH year.

Project Features

- Private Rooms
- Ability to Control Individual Room Temperature
- Home-like Environment
- Access to Natural Light
- Improved Social and Common Spaces
- Private Bathrooms
- Maximize Operating Efficiency
- Increase Efficiency in Care
- State-of-the-Art Physical Therapy Rehab Gym
- Inpatient and Outpatient Services
- User Friendly
- Beautiful Country View and Landscape
- Enhanced Occupational Therapy Spaces
- Increased Comfort for Residents
- Assisted Living Options
- Improved Lighting
- Updated Speech Therapy Space
- Energy Efficient Building and Systems
- Neighborhood Style
- Access to Internet and Cable TV
- Ability to Expand if Future Need Arises

Please visit the Pine Valley website for more information. Questions and concerns can also be directed to Kathy Cianci at Kathy.Cianci@co.richland.wi.us.